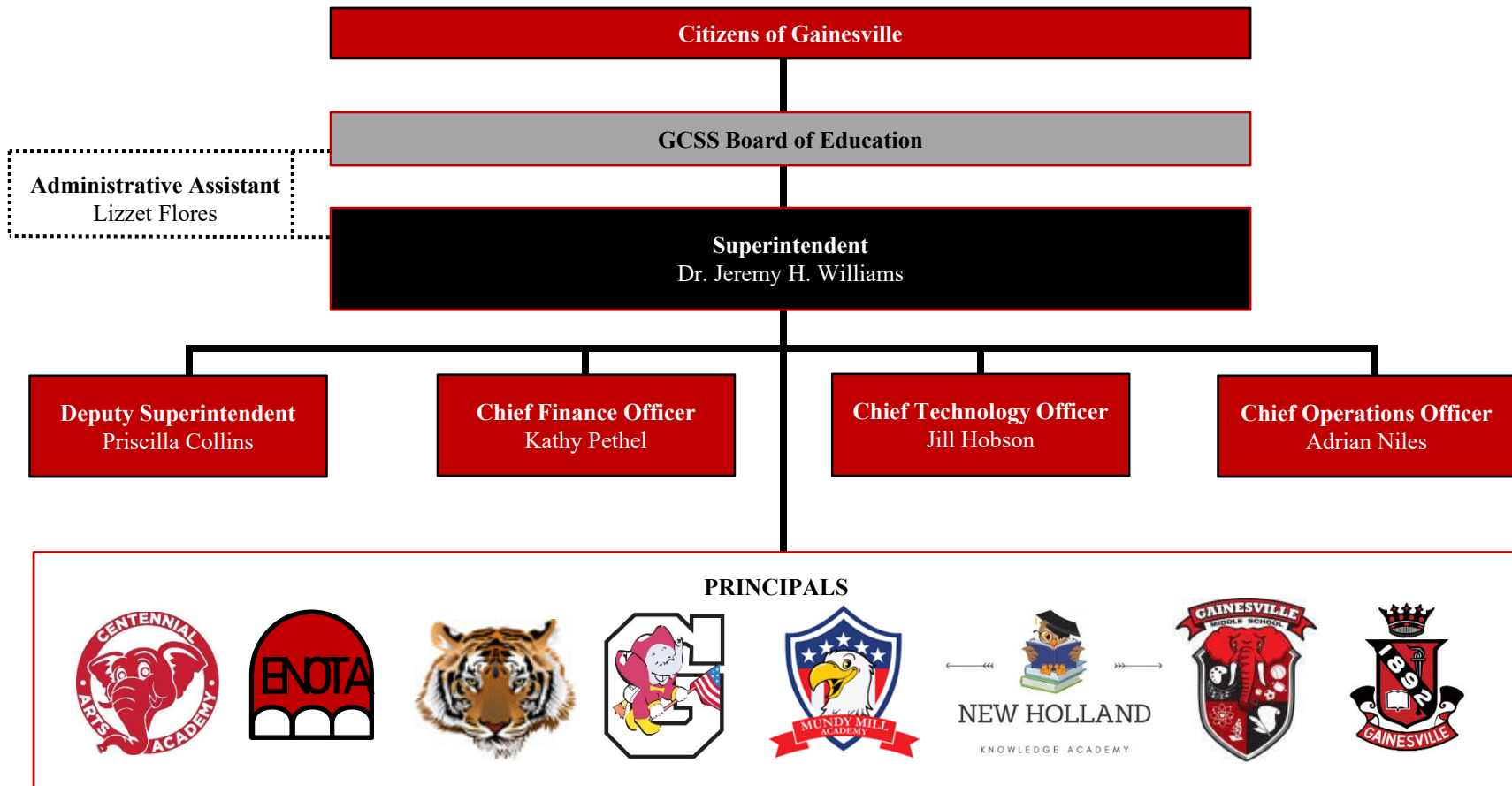


2021-2022 GCSS Organization Chart

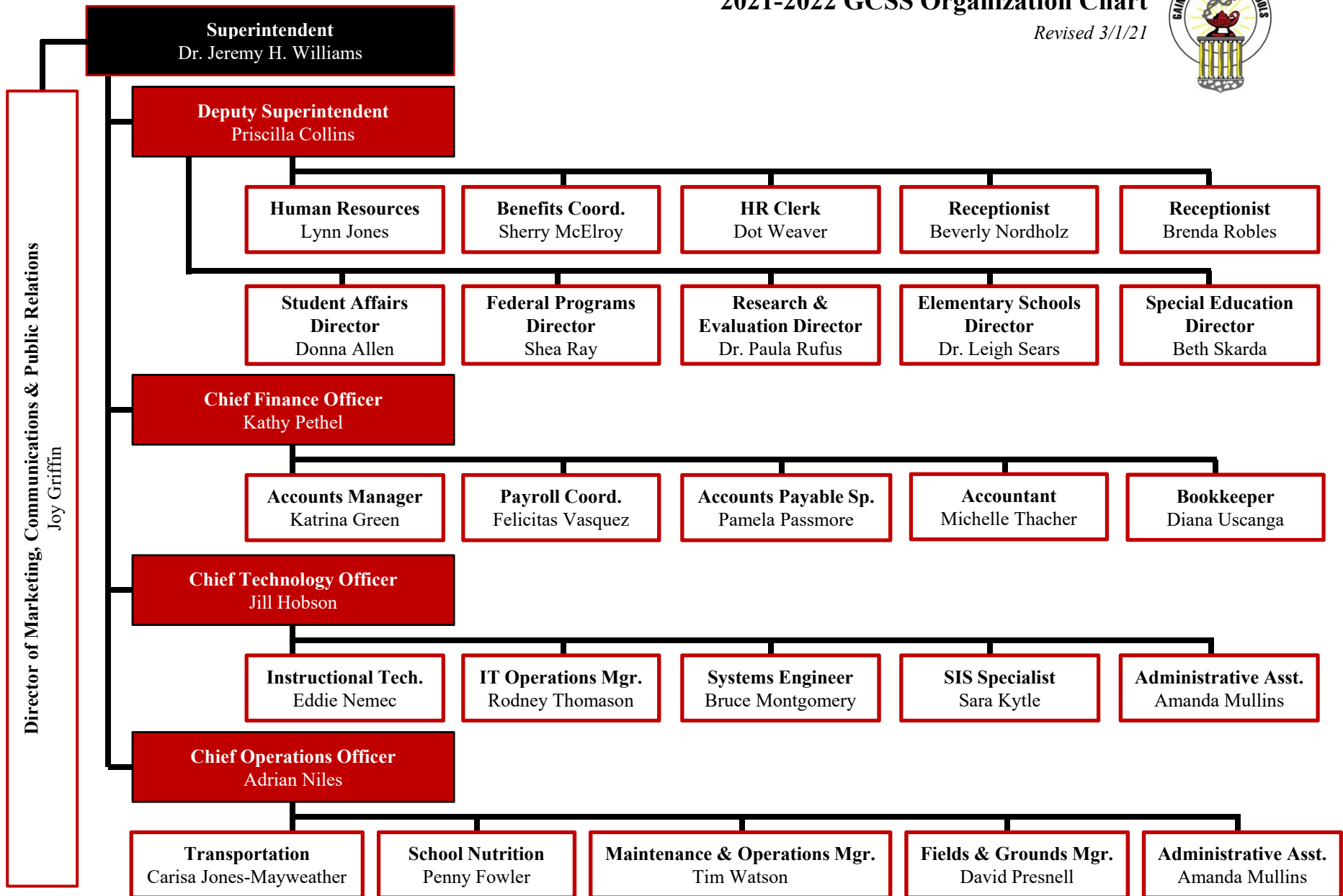
Revised 3/1/21



ONE *Gainesville* **INSPIRE, NURTURE, CHALLENGE, PREPARE**

2021-2022 GCSS Organization Chart

Revised 3/1/21



GCSS ACADEMICS & WRAPAROUND COLLABORATIVE TEAM

Areas of Responsibility



Student Affairs Donna Allen	<i>Registration, School Choice, Records, Monitoring Class Size, Policy, Discipline, Tribunals, Complaints</i>
Federal Programs Shea Ray	<i>Federal Program Compliance (except SpEd), Con App Mgmt, GaDOE Accountability Contact, Professional Learning for ESOL and CTAE Staff</i>
Research & Evaluation Dr. Paula Rufus	<i>Assessments (Milestones, AP, Access, Screeners, etc.), Equity, Charter System Contact, Accreditation, Professional Learning related to Assessment</i>
Elementary Schools Dr. Leigh Sears	<i>Elementary Schools, including Pre-K, Counselors, Social Workers, School Improvement, and related Professional Learning; District Interventions; Nurses</i>
Special Education Beth Skarda	<i>Professional Learning for Special Education Staff, 504s, Contracted Services, State Reporting, FUTURES, Evaluation Management</i>
Secondary Student Services Tonya Sanders	<i>The Hub Director, Counselors, Social Workers, Secondary Student Services Professional Learning</i>
Instructional Technology Eddie Nemec	<i>Instructional Technology, Media Specialists, Software, Student Privacy, Instructional Technology Professional Learning</i>