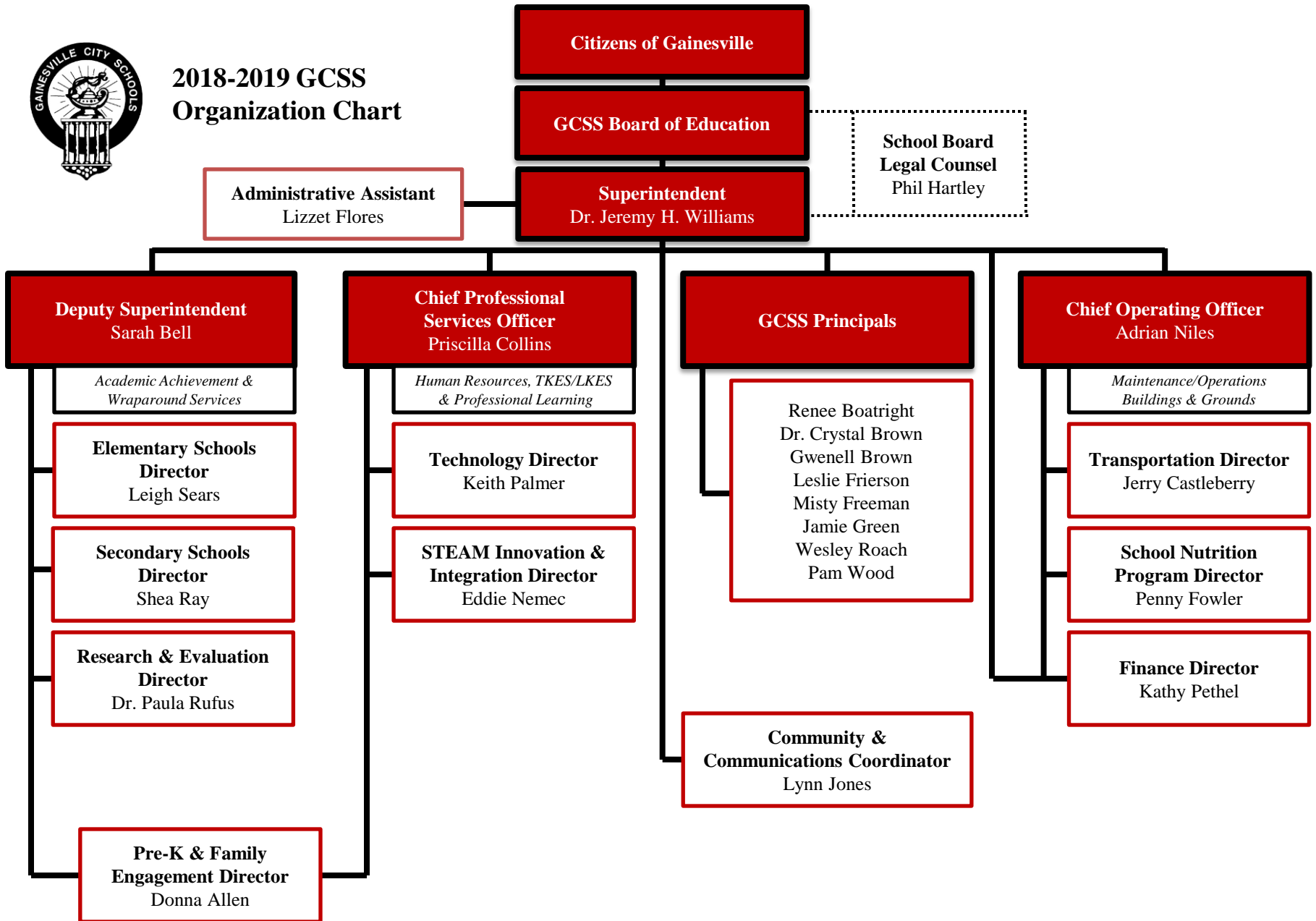




**2018-2019 GCSS
Organization Chart**

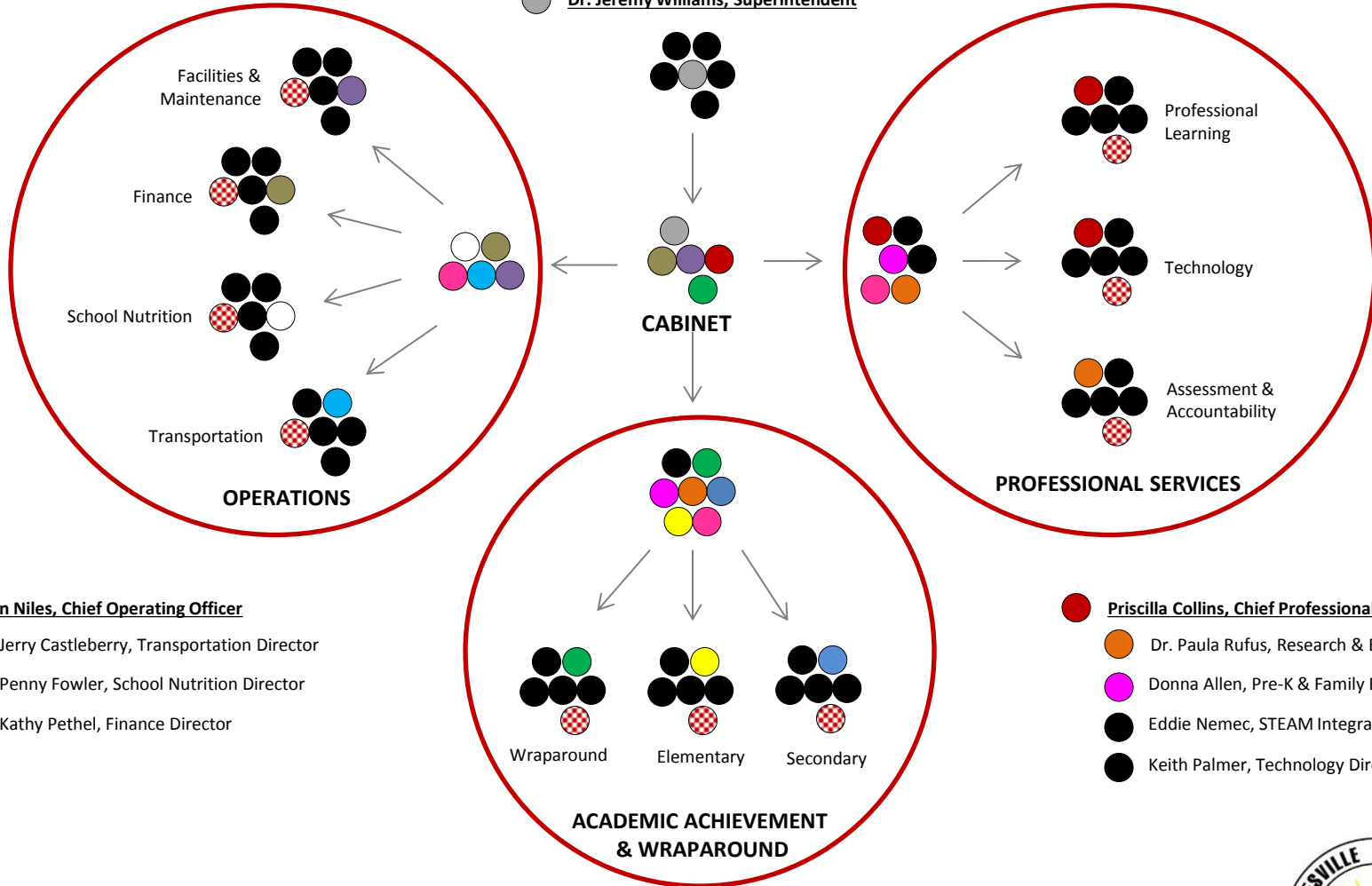


GAINESVILLE CITY SCHOOL SYSTEM

Collaborative Team Structure

Board of Education

● Dr. Jeremy Williams, Superintendent



- Adrian Niles, Chief Operating Officer
- Jerry Castleberry, Transportation Director
- Penny Fowler, School Nutrition Director
- Kathy Pethel, Finance Director

- Lynn Jones, Communications Coordinator
- Media Team Members

- Sarah Bell, Deputy Superintendent
- Shea Ray, Secondary Schools Director
- Leigh Sears, Elementary Schools Director
- Dr. Paula Rufus, Research & Evaluation Director
- Donna Allen, Pre-K & Family Engagement Director

- Priscilla Collins, Chief Professional Services Officer
- Dr. Paula Rufus, Research & Evaluation Director
- Donna Allen, Pre-K & Family Engagement Director
- Eddie Nemece, STEAM Integration Director
- Keith Palmer, Technology Director

